

Application

Volumetric/gravimetric feeder for non free flowing powders and pellets, premixes, fibres, grinded materials, micro-pellets.

Volumetric Feeder HETHON-FLEX HF31

Single screw feeder with flexible hopper

Material: Stainless steel, powder coated.
 PUR-hopper

Dimensions L: 250 mm W: 215 mm H: 245 mm

Weight: appr. 12 kg

Add. Hopper: Basic-Hopper 7 dm³, H: 240 mm

Drive: 230/400 VAC 50 Hz gear moto

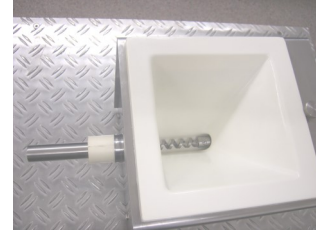
Red. A=20,2 (max. 15 kg/h)

Red. B=50,3 (max. 8 kg/h)

Red. C=139,8 (max. 3 kg/h)

FI LENZE Vektor: 3 bis 100 Hz

Output-rate: appr. 0,03 dm³/h to 30 dm³/h



Exchangeable dosing tools, like screws and tube-outlets allow the ideal adaptation of output-rate and bulk density.

Feeder screws from Ø10 mm to Ø 18 mm

Feeder tubes (with / without vertical outlet): von Ø 12 mm bis Ø 22 mm

Loss-in-Weight Feeder type: SMART

HETHON-FLEX HF31 - Single screw feeder mounted on **BASIC300** - Scale

Scale: **BASIC300**

Weight capacity: 30, 75 kg

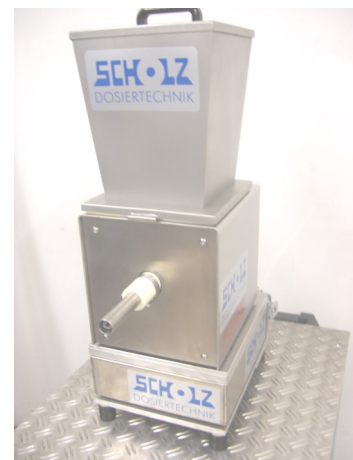
Dimensions scale: 300 x 300 mm

Dimensions compl.: 390 x 300 x 150 mm

Material: Alu / high grade steel

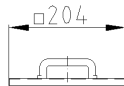
Construction: plug and play

Weight: 11 kg



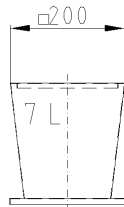
The **CON-TRUST** control system generates individual- and multiple - feeder control.

Part-Nr. kg €*



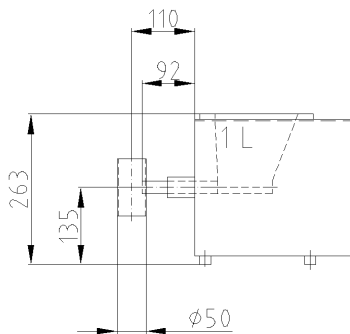
MANUAL LID
 ML-22

0,6 100



BASIC HOPPER
 BH-222-007

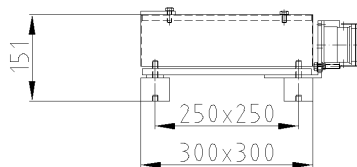
3,0 300



FEEDER

HF 31 12,0 3000

HF 31-RC 0,5 500



SCALE

BASIC300 11,0 2250

BASIC301+RC

Differential-Dosierwaage SMART
Loss-in-Weight-Feeder SMART

* Preise können von den aktuellen Listenpreisen abweichen