

Application

Volumetric/gravimetric feeder for non free flowing powders and pellets, premixes, fibres, grinded materials, micro-pellets.

**Volumetric Feeder HETHON-FLEX HF71**

Single screw feeders with flexible hopper

Material:	Stainless steel, powder coated. PUR-hopper
Dimension:	L600 mm x W600 mm x H420 mm
Weight:	HF61/HF71 approx. 73 kg
Available hoppers:	Basic-Hopper 125 dm ³ , H: 500 mm Basic-Hopper 175 dm ³ , H: 700 mm Stack-Hopper 150 dm ³ , H: 600 mm (stackable)
Drive:	230/400 VAC 50 Hz 370W gear-motor Frequency-inverter range: 3 to 100 hz
Output-rate:	approx. 15 to 2500 dm ³ /hr



Exchangeable dosing tools, like screws and tube-outlets allow the ideal adaptation of output-rate and bulk density.

Feeder screws: Ø 40 mm to Ø 75 mm

Feeder tubes (horizontal / vertical outlet): Ø 40 mm to Ø 80 mm

OPTION: Additional paddle-drive HETHON-FLEX HF72

Drive:	Frequency-inverter, range: 3 to 100 hz
Weight:	approx.: 82 kg

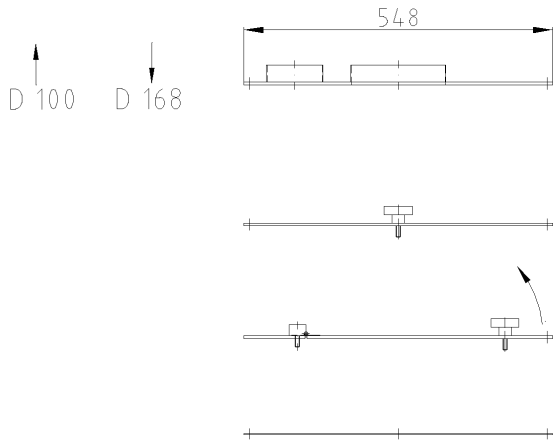
Loss-in-Weight Feeder type: SOLID

HETHON-FLEX HF71/72 - Single screw feeder
mounted on a **BASIC600** - Scale:

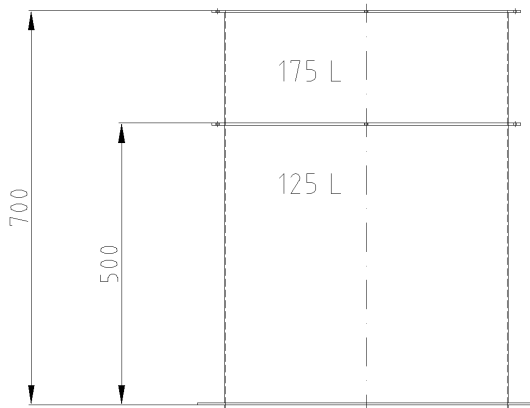
Scale:	BASIC600
Weight capacity:	300 kg
Dimensions scale:	600 x 600 mm
Dimensions compl.:	690 x 600 x 150 mm
Material of components:	Aluminium/ high-grade steel
Construction:	plug and play
Weight:	30 kg

The **CON-TRUST** control system generate individual -and multiple - feeder control.

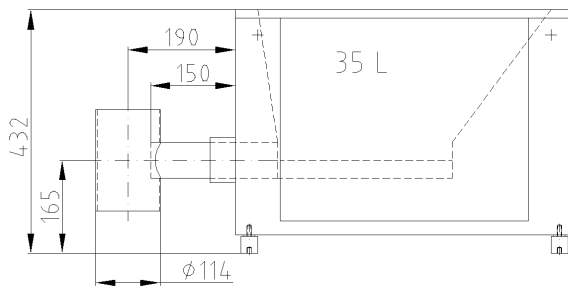




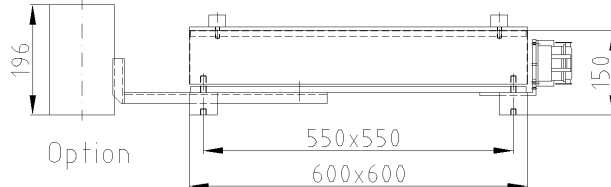
Part-Nr.	kg	€*
AUTO LID AL-55	4,0	300
MANUAL LID ML-55	4,5	150
FLAP LID FL-55	4,7	300
SAFETY GRID SG-55	1,6	200



BASIC HOPPER BH-557-175	28,0	800
BH-555-125	21,0	700



FEEDER		
HF 71	73,0	3900
HF 72	82,0	5400
HF 71-RC	0,5	500



SCALE		
BASIC600	30,0	3000
BASIC601+RC		
BASIC602+2xM+RC		
BASIC603+2xM		

Differential-Dosierwaage SOLID Loss-in-Weight-Feeder SOLID

* Preise können von den aktuellen Listenpreisen abweichen