

## Application

volumetric / gravimetric feeding of solids.

Pellets     Micro-Pellets     Grind     Powder     Fibers

## SCHOLZ TWIN40

### Double-Screw Feeder with Agitator.

- suitable for sticky, dull, also very light additives
- double-motorisation as standard
- horizontal agitator as standard
- removable front and rear plate for easy cleaning

### Dosing-capacity of the SCHOLZ TWIN-Series

kg/h (bei 0,5kg/l)	0,1	1	5	10	50	100	500	1.000	5.000	10.000	25.000
TWIN20	[Bar chart showing capacity ranges for TWIN20]										
<b>TWIN40</b>	[Bar chart showing capacity ranges for TWIN40]										
TWIN60	[Bar chart showing capacity ranges for TWIN60]										

Screw pairs: DK concave / DK concave narrow / DV Fullblade / special  
 Tube-Outlet: horizontal / vertical / with shutter  
 Hopper: 15 Liter  
 Add. Hopper: 40 / 70 / 150 Liter  
 Lid: for manual refilling / automatic refilling  
 Options: ATEX  
 Material: Stainless Steel 1.4301  
 Weight: appr. 60kg (without hoppers)  
 Dimension: 320x320x425mm (TxBxH)  
 Gear-Motor: A i=10 Δ230/Y400V; 1,96/1,1A; 0,37kW; 1400; 50Hz  
                   B i=30 Δ230/Y400V; 1,96/1,1A; 0,37kW; 1400; 50Hz  
                   C i=80 Δ230/Y400V; 1,96/1,1A; 0,37kW; 1400; 50Hz  
 Agitator-Motor: Δ230/Y400V; 1,96/1,1A; 0,37kW; 1400; 50Hz

## Loss-in-weight-Feeder DUPLO40

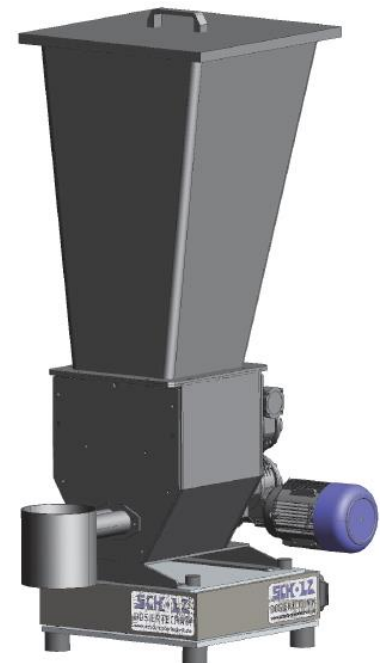
In combination with a SCHOLZ BASIC platform scale, you have a gravimetric feeding-scale.

Scale : **BASIC400**  
 Capacity : 75 / 150 / 300kg  
 Platform : 400 x 400mm  
 Scale : 490 x 400 x 150mm (DxWxH)  
 Material : Alu / Stainless Steel  
 Execution: plug & play  
 Own weight: 11kgs

The SCHOLZ-CON-TRUST control system enables single- and multi-component operation.



TWIN40 mit 70-Liter-Trichter und horizontalem Austragrohr



TWIN40 mit 70-Liter-Trichter und vertikalem Austragrohr auf Plattformwaage BASIC400