

Application

volumetric / gravimetric feeding of solids.

Pellets Micro-Pellets Grind Powder Fibers

SCHOLZ GOLO

Double-Screw-Feeder.

- cost-effective solution for high dosing capacities
- proven many times for regrind, recycling material, etc.
- extensive, modular hopper system
- made in Germany

Dosing-capacity of the SCHOLZ Series

kg/h (bei 0,8kg/l)	0,1	1	5	10	50	100	500	1.000	5.000	10.000	25.000
LOGO											
MONO+											
SOLO											
GOLO											

Screws: \varnothing 40mm to \varnothing 100mm in spiral / full-blade /
with core / double-helix / notched / special

Tube-outlet: horizontal / vertical

Hopper: 56 Liter

Add. Hopper: 125 to 280 Liter, expandable

Lid: for manual / automatical refilling /
Flap-Lid / Plexiglass / for Conveyors

Options: Agitator in add. hopper, ATEX, Run Control

Material: Stainless Steel 1.4301

Weight: appr. 70kg (without add. hoppers)

Dimensions: 600x600x250mm (DxWxH)

Gear-Motors: A $i=5,1$ 2x Δ 230/Y400V; 0,99/1,71A; 0,37kW; 1425U/min; 50Hz
B $i=17,8$ 2x Δ 230/Y400V; 0,99/1,71A; 0,37kW; 1425U/min; 50Hz
C $i=60,1$ 2x Δ 230/Y400V; 0,62/1,07A; 0,18kW; 1400U/min; 50Hz

Agitator (Option): $i=100$ Δ 230/Y400V; 1,2/0,7A; 0,18kW; 1350U/min; 50Hz

LOSS-IN-WEIGHT FEEDER GOLIA

In combination with a SCHOLZ BASIC platform scale, you have a gravimetric feeding-scale.

Scale: **BASIC600**

Capacity: 300kg

Platform: 600 x 600mm

Dimensions: 690 x 600 x 150mm (TxBxH)

Material: Aluminium / stainless steel

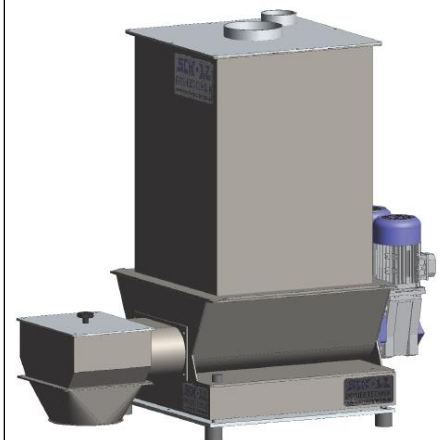
Execution: plug & play

Own weight: 30kg

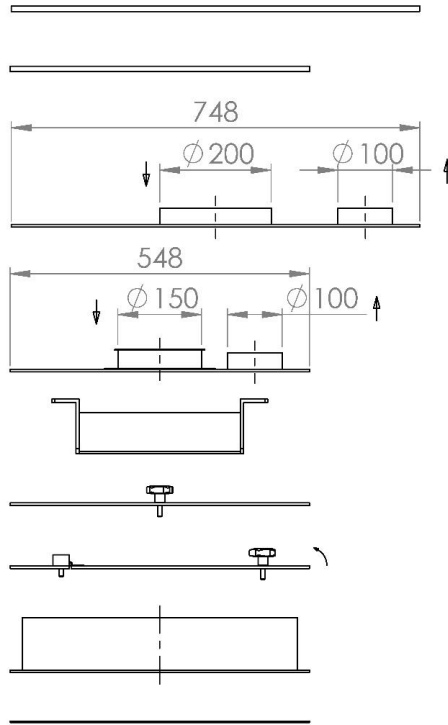
The SCHOLZ-CON-TRUST control system enables single- and multi-component operation.



GOLO with 280+350-liter-hopper and socket for level-indicator, with horizontal tube-outlet



GOLO with 175-liter-hopper and vertical tube-outlet placed on platform-scale BASIC600



REFILL LID

RLS-7	14,0 kg
RLS-5	7,0 kg

AUTO LID

ALS-7	7,2 kg
ALS-5	4,2 kg

GUIDE ANGLE

GA	1,3 kg
----	--------

MANUAL LID

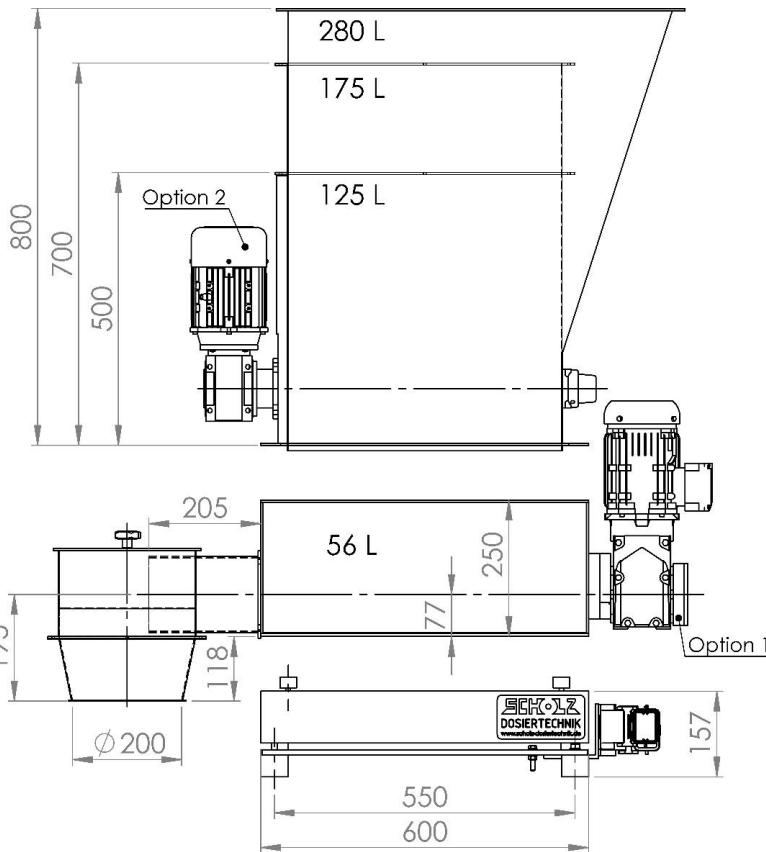
MLS-5	4,0 kg
-------	--------

FLAP LID

FLS-5	4,3 kg
-------	--------

SAFETY GRID

GAS-5	5,0 kg
SGS-5	1,3 kg



BASIC HOPPER

BH-280-578	36,0 kg
BH-175-557	22,0 kg
BH-125-555	17,0 kg

Option 2
HAH-5
HORIZONTAL AGITATOR

FEEDER

GOLO	70,0 kg
Option 1 GOLO-RC RUN CONTROL	0,5 kg

SCALE

BASIC600	30,0 kg
----------	---------

Differential-Dosierwaage GOLIA
Loss-in-Weight-Feeder GOLIA